

Pig Dissection Alternative Assignment Day 1- Questions

You may need to use a textbook or the lab write up to answer these questions. The alternative assignment consists of questions, diagrams, and a computer activity.

External Anatomy

1 Define the following terms:

dorsal-

ventral-

lateral-

medial-

anterior-

posterior-

Using the external anatomy of a pig diagram, answer the following questions.

2 Are there any external structures of a pig that are **different** from those of a human? If so, identify them.

3 Are there any external structures of a pig that are **similar** to those of a human? If so, identify them.

4 Using a ruler, measure the length of your pig diagram from snout to the base of its tail and record your measurement in centimeters.

| |
|---------------|
| Length of Pig |
| |

5 Using the data above in question 4 and the table, determine the approximate age of the pig.

| Length (Cm) | Approximate age (days) |
|-------------|------------------------|
| 1.1 | 21 |
| 1.7 | 35 |
| 2.8 | 49 |
| 4.0 | 56 |
| 22.0 | 100 |
| 30.0 + | Full term 112-115 |

| |
|------------------------|
| Approximate age of pig |
| |

6 What is the function of the umbilical cord? What is the function of the umbilical vein? What is the function of the umbilical artery?

The Digestive System

Explain the functions of the following digestive system structures.

7 liver-

8 stomach-

9 esophagus-

10 rugae (found in the stomach)-

11 small intestine-

12 pyloric sphincter-

13 pancreas-

14 gall bladder-

15 mesentery-

16 chyme-

17 duodenum-

18 jejunum-

19 ileum-

20 villi (in the small intestine)-

21 large intestine-

22 rectum-

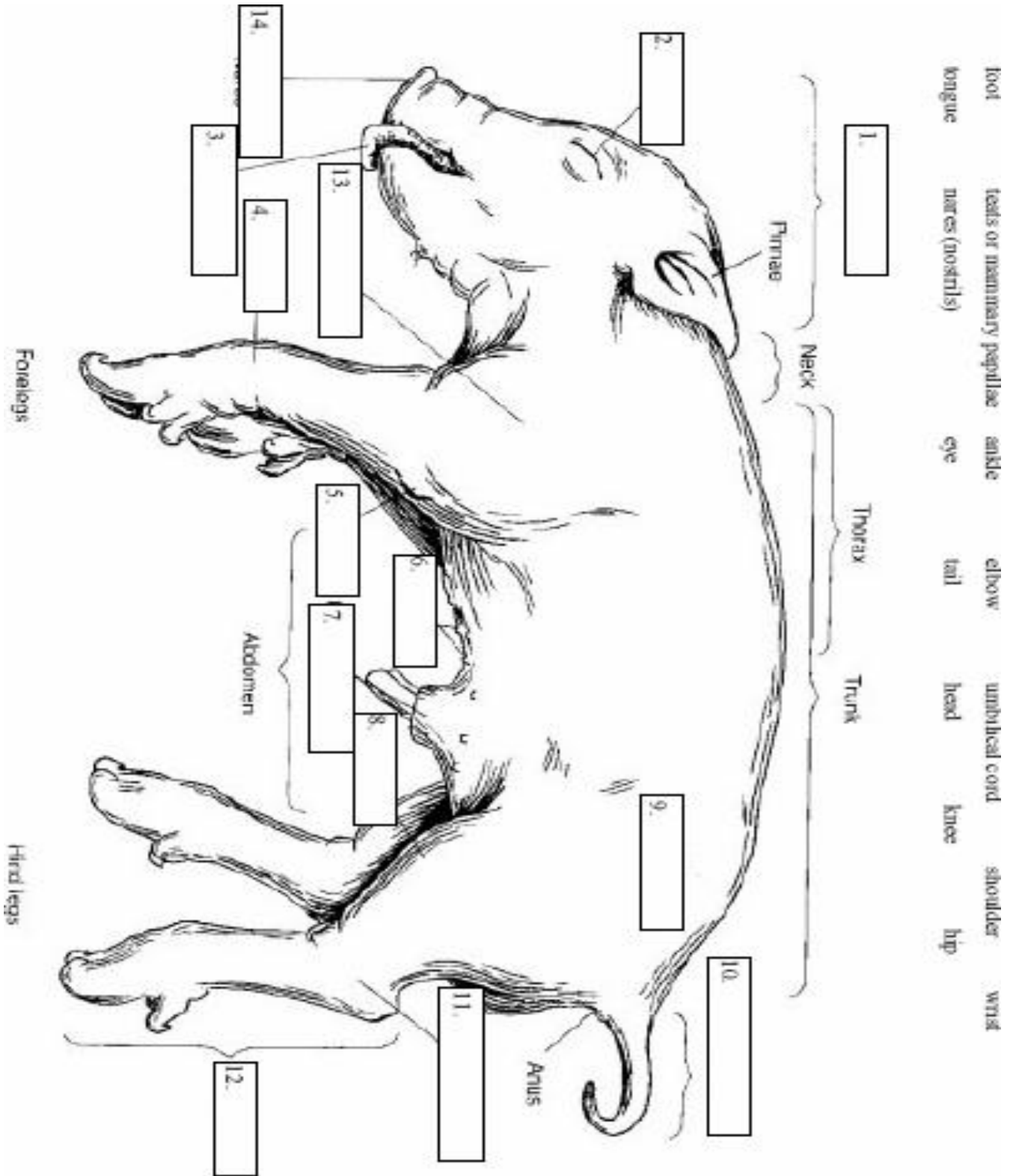
23 anus-

24 Pigs are ruminants. What does this mean?

Pig Dissection- Systems Diagrams Day 1

External Anatomy

Label the external structures of the pig.



The Digestive System

Label the following structures: Liver, small intestine, spleen, gall bladder, pancreas, large intestine, and stomach

