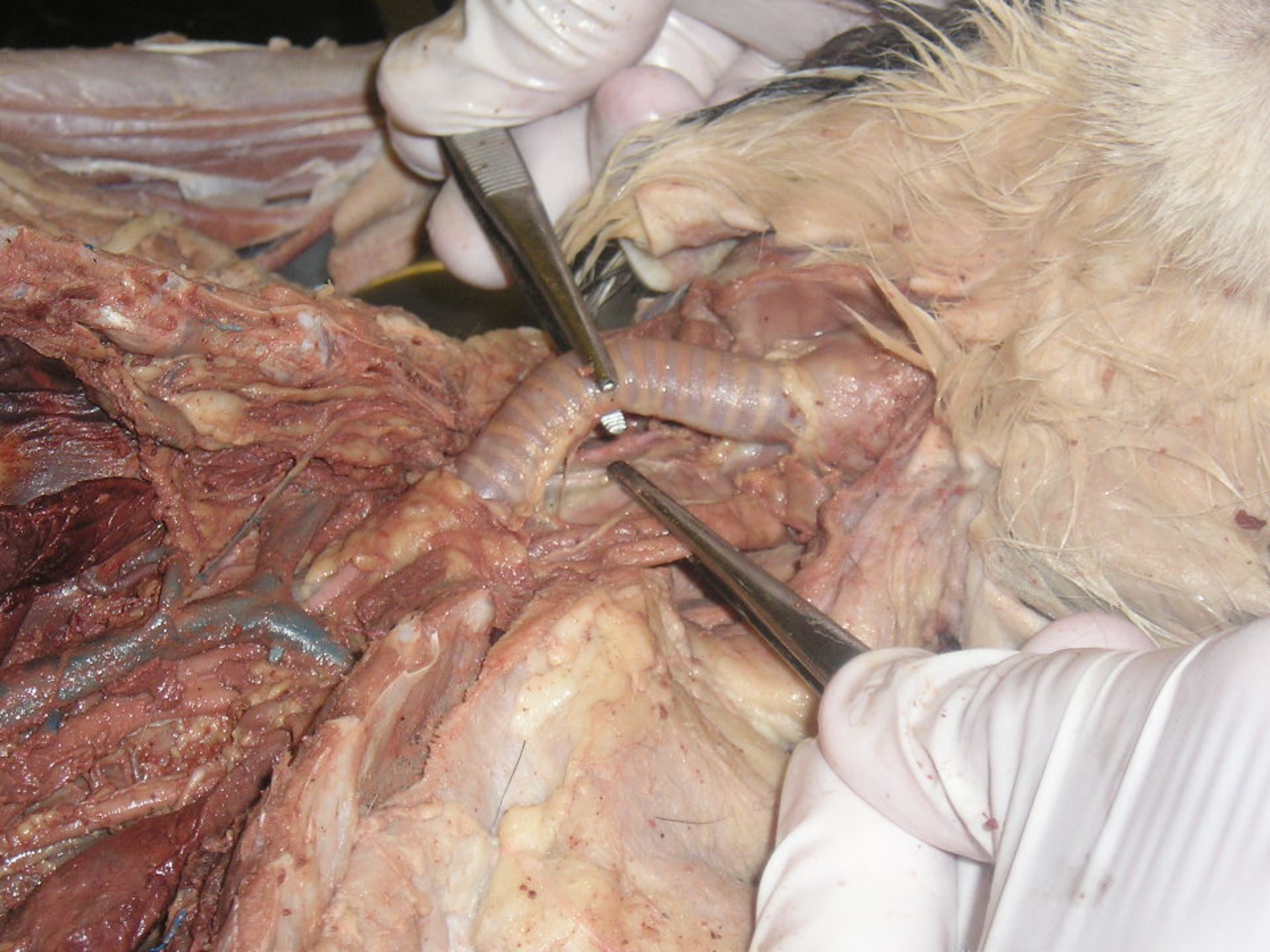
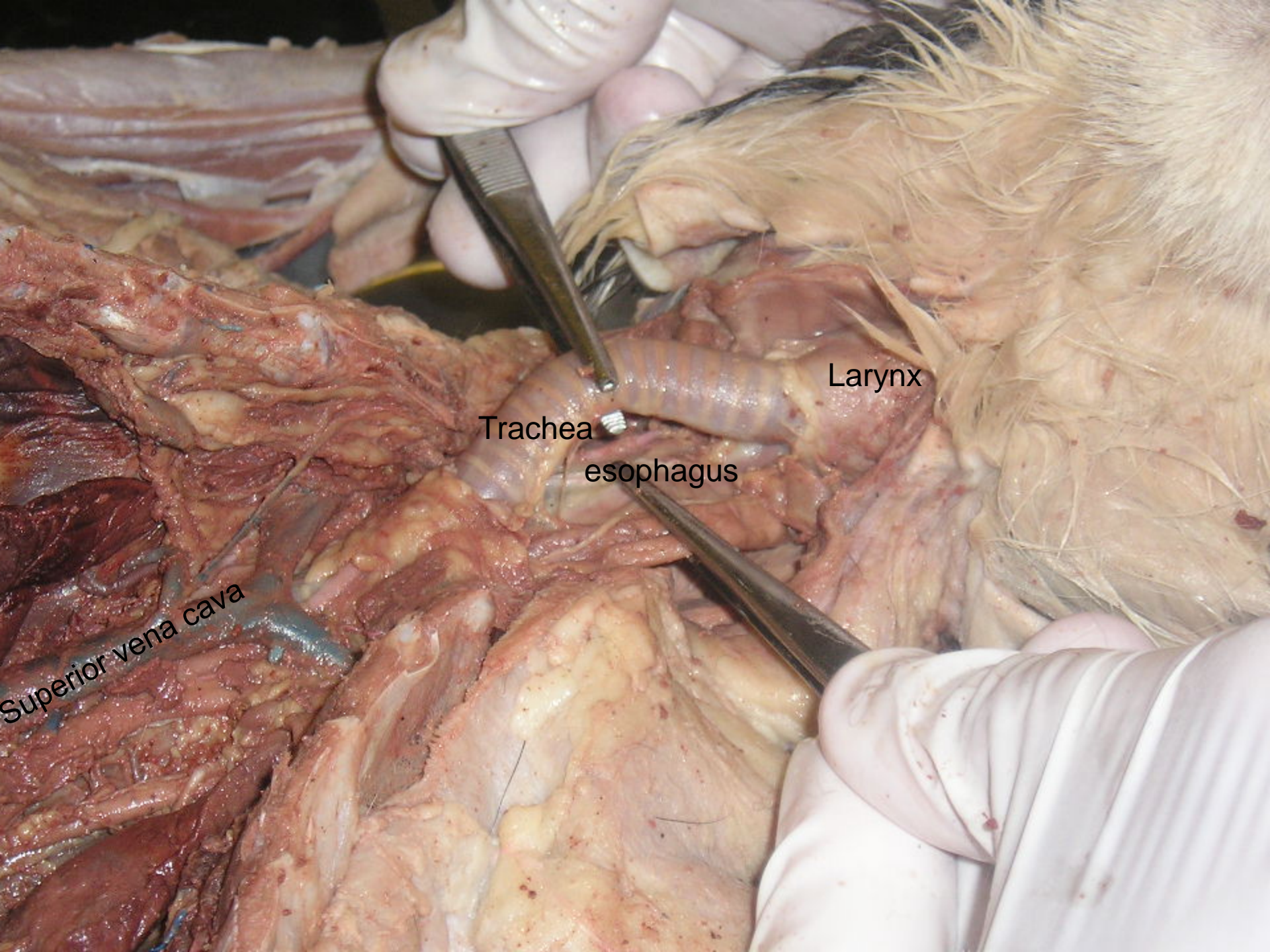


An anatomical dissection of a human torso, showing the internal organs. The heart is visible in the lower center, surrounded by the lungs and other thoracic structures. The ribcage is visible on the left side. The dissection is performed on a cadaver, with white gloves visible at the top and bottom edges. The text "Card Dissection Organs" is overlaid in a stylized font across the center of the image.

Card Dissection Organs

by: Megan Buehler



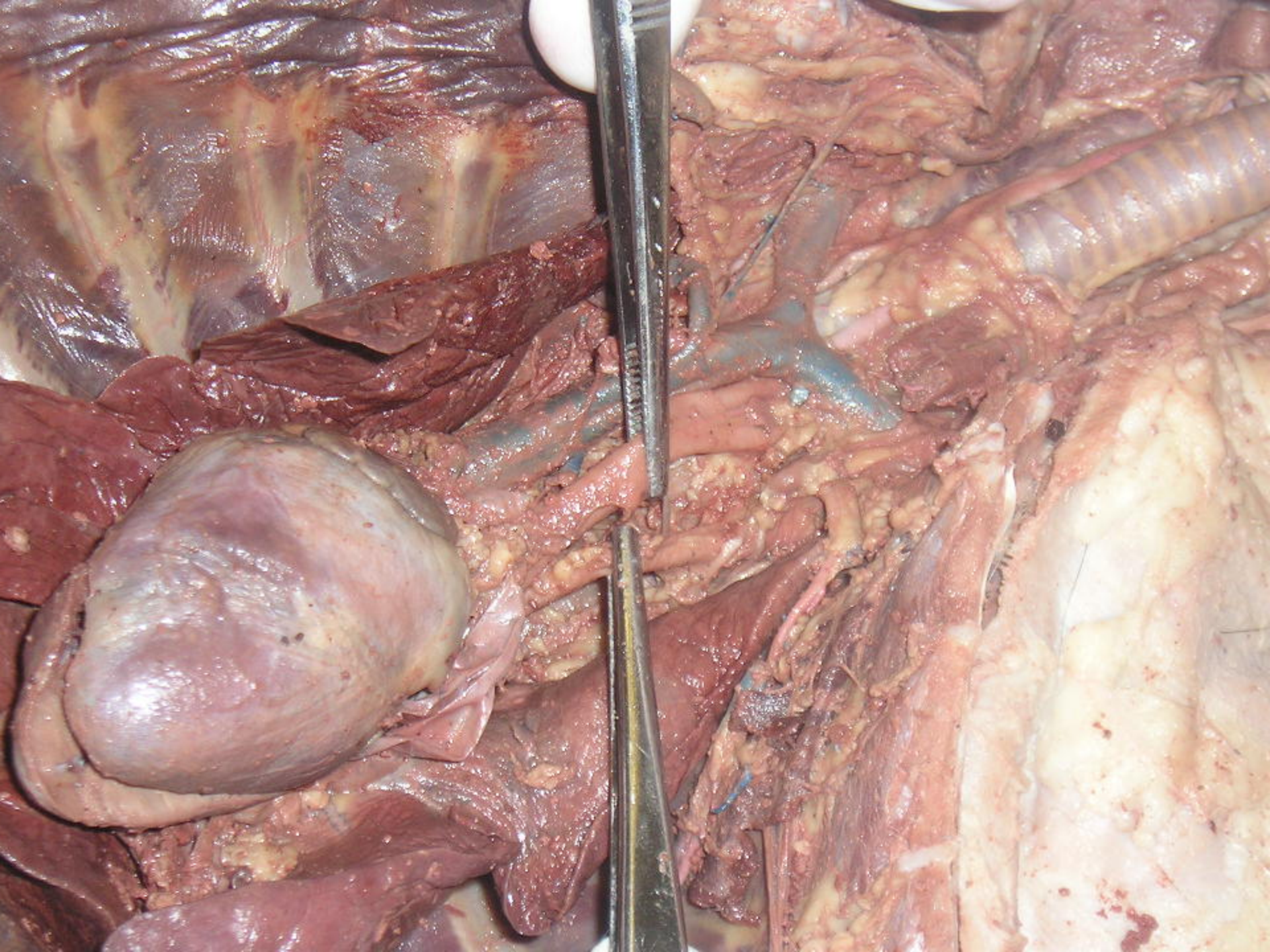


Larynx

Trachea

esophagus

Superior vena cava



(not shown) Pulmonary trunk

(Not shown) ascending aorta

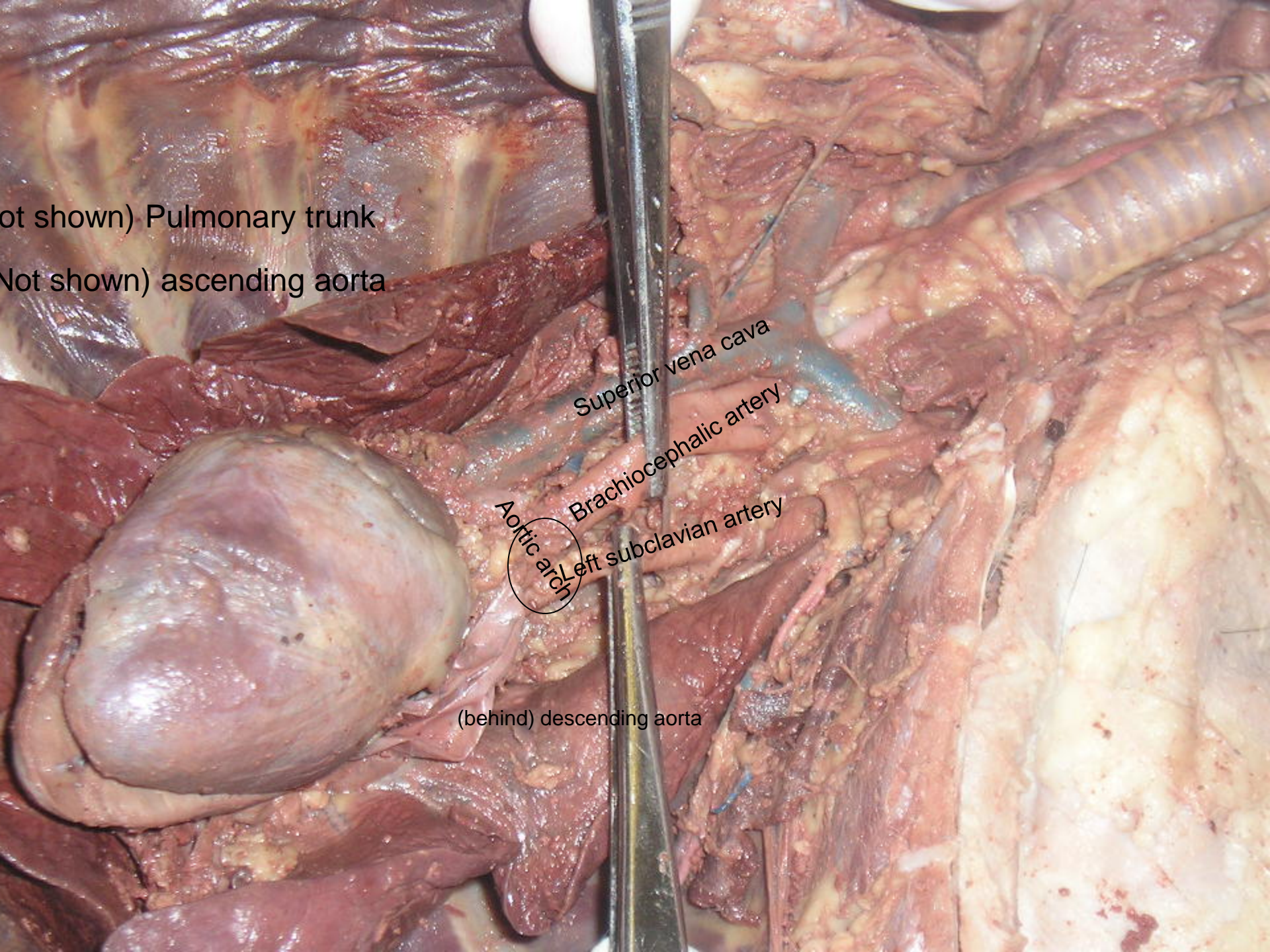
Superior vena cava

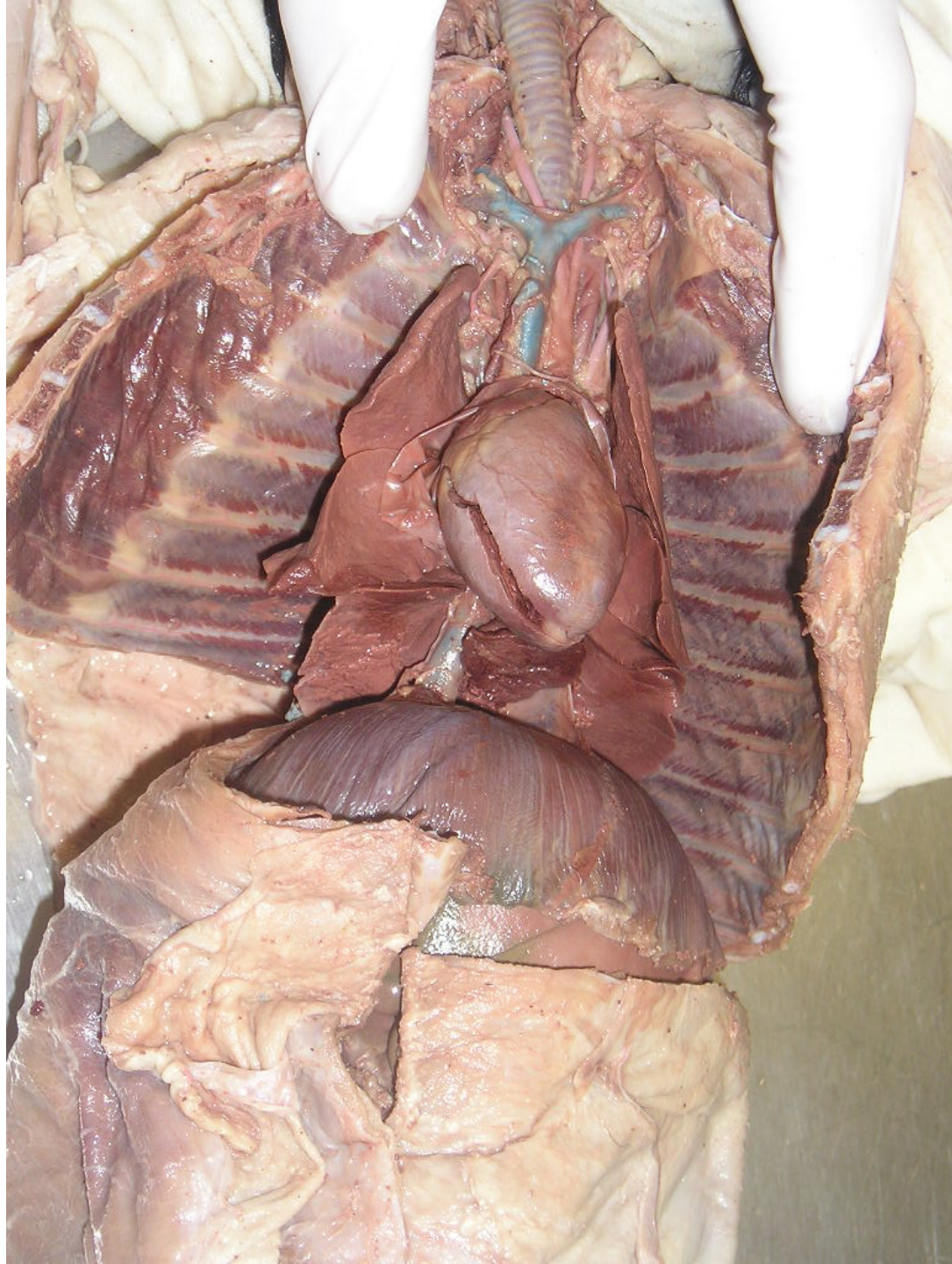
Brachiocephalic artery

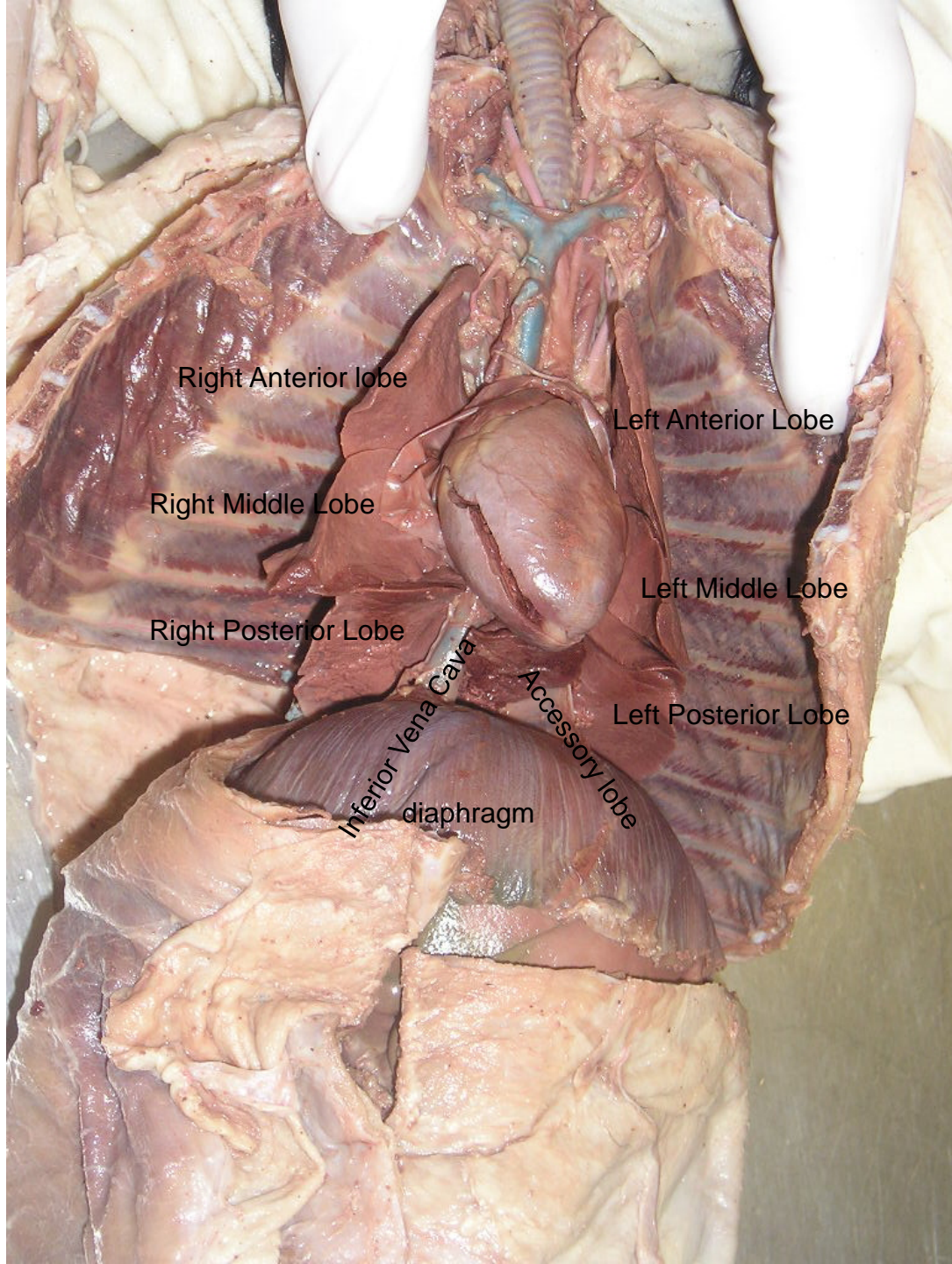
Aortic arch

Left subclavian artery

(behind) descending aorta







Right Anterior lobe

Left Anterior Lobe

Right Middle Lobe

Left Middle Lobe

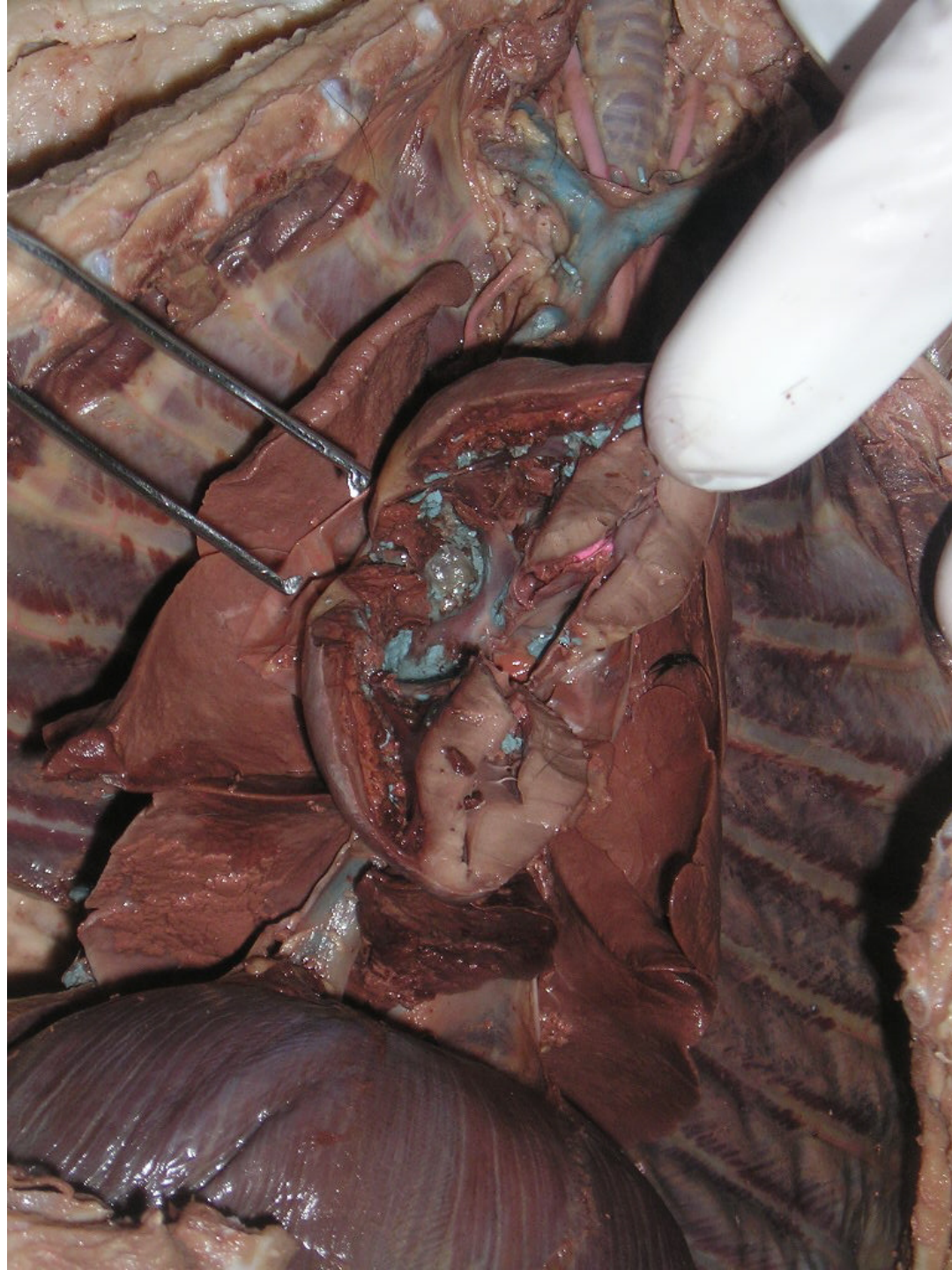
Right Posterior Lobe

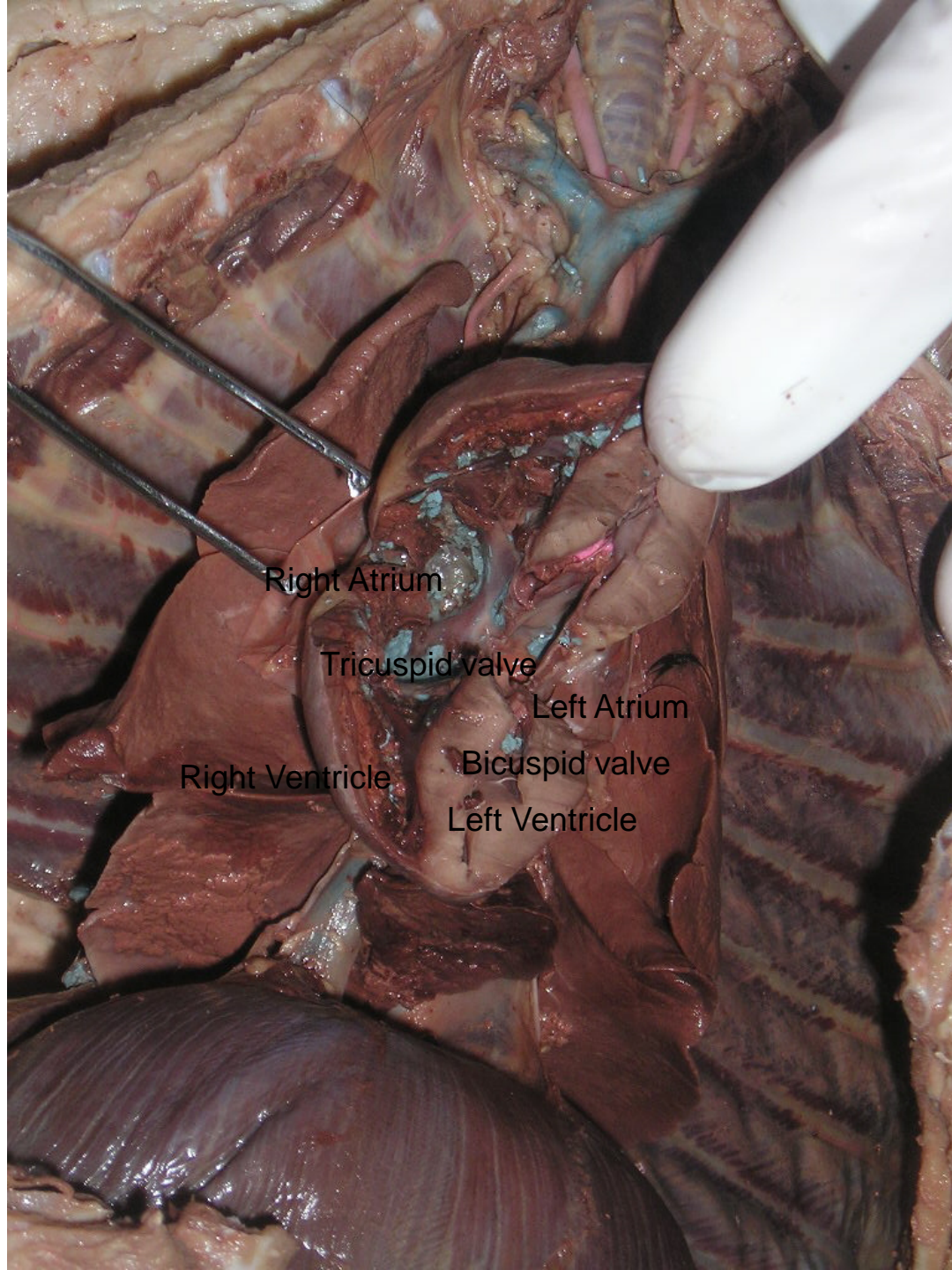
Left Posterior Lobe

Inferior Vena Cava

Accessory lobe

diaphragm





Right Atrium

Tricuspid valve

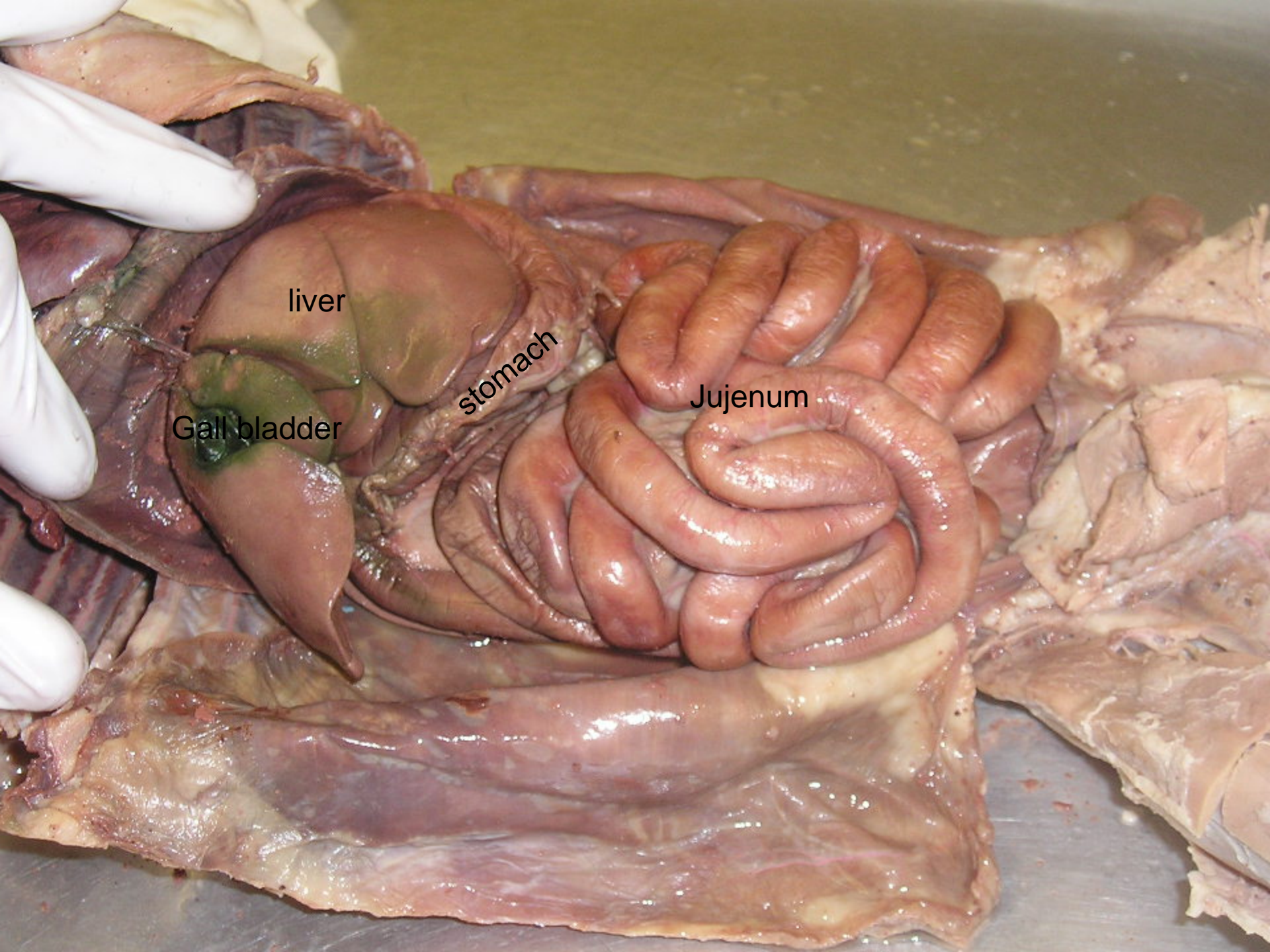
Left Atrium

Right Ventricle

Bicuspid valve

Left Ventricle





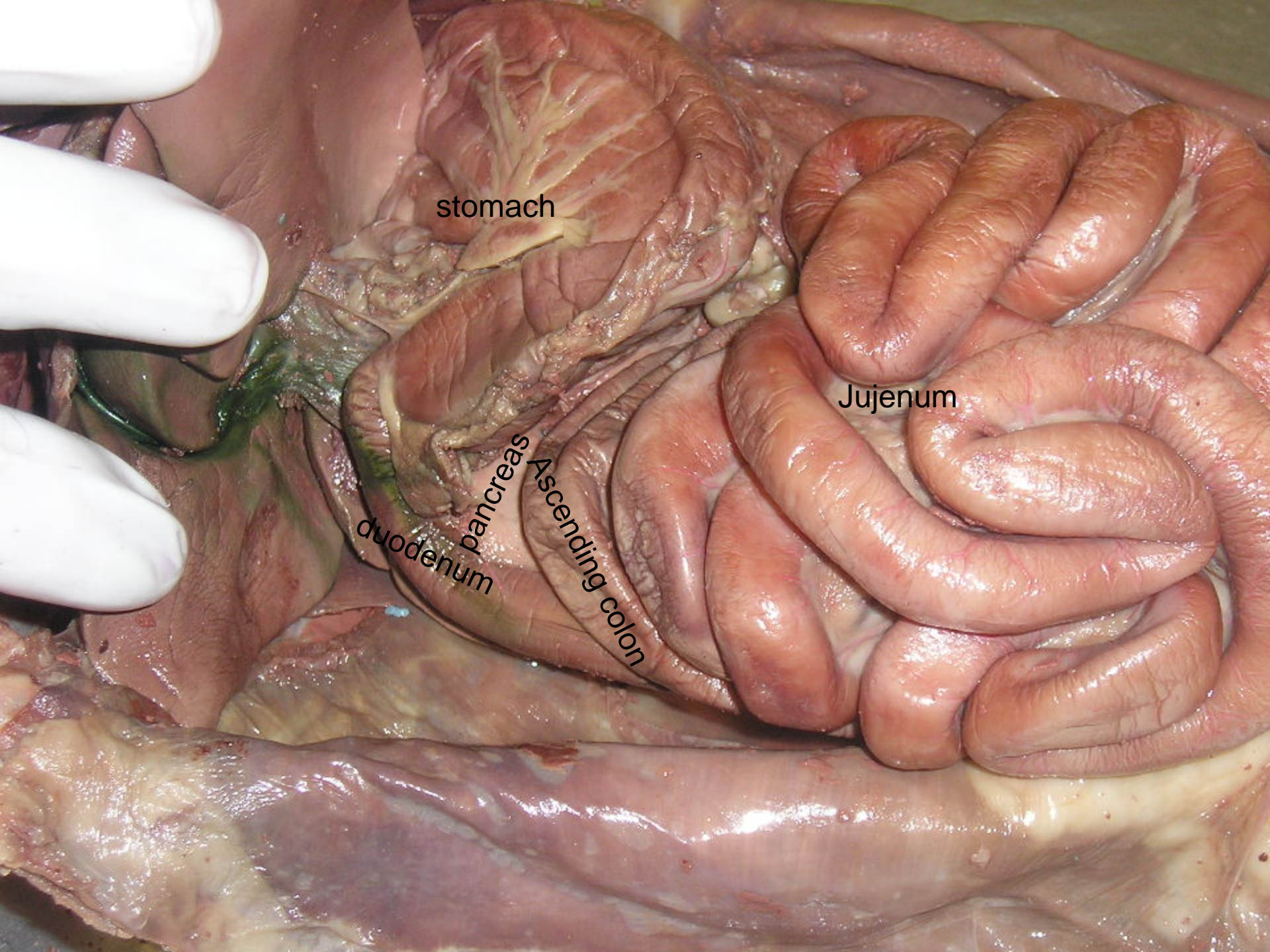
liver

stomach

Jejunum

Gall bladder



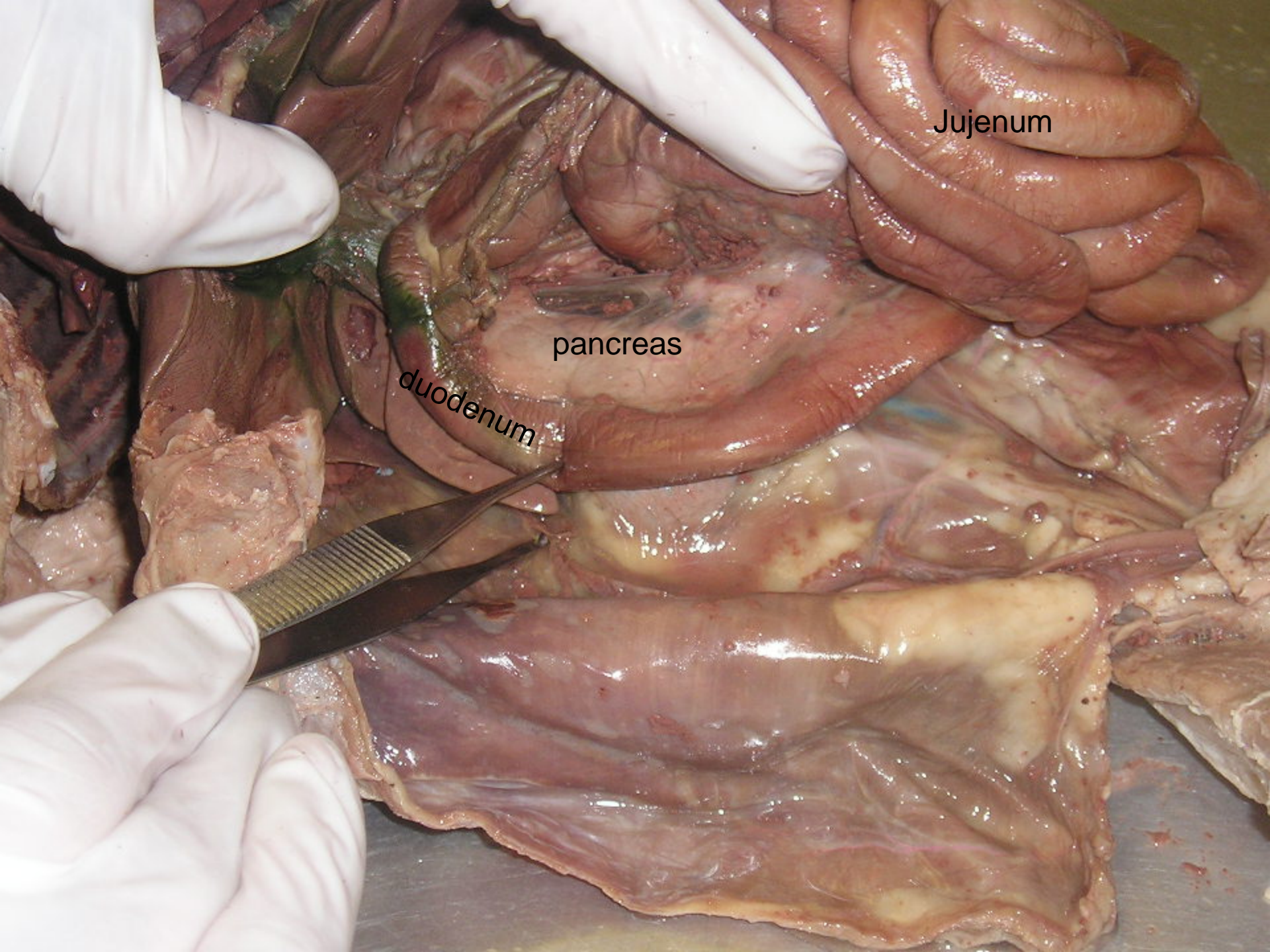


stomach

Jujenum

pancreas
Ascending colon
duodenum



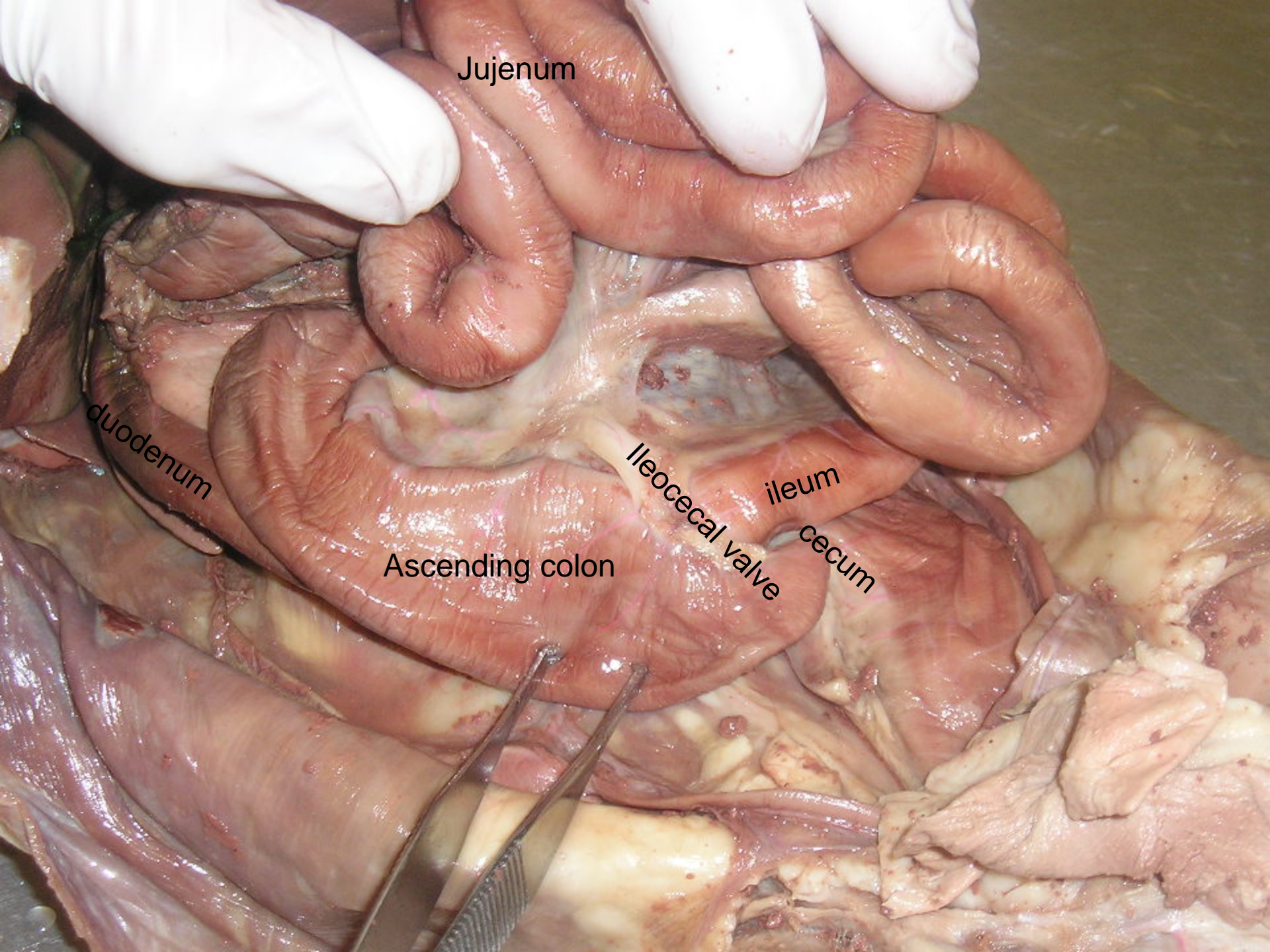


Jejunum

pancreas

duodenum





Jejunum

duodenum

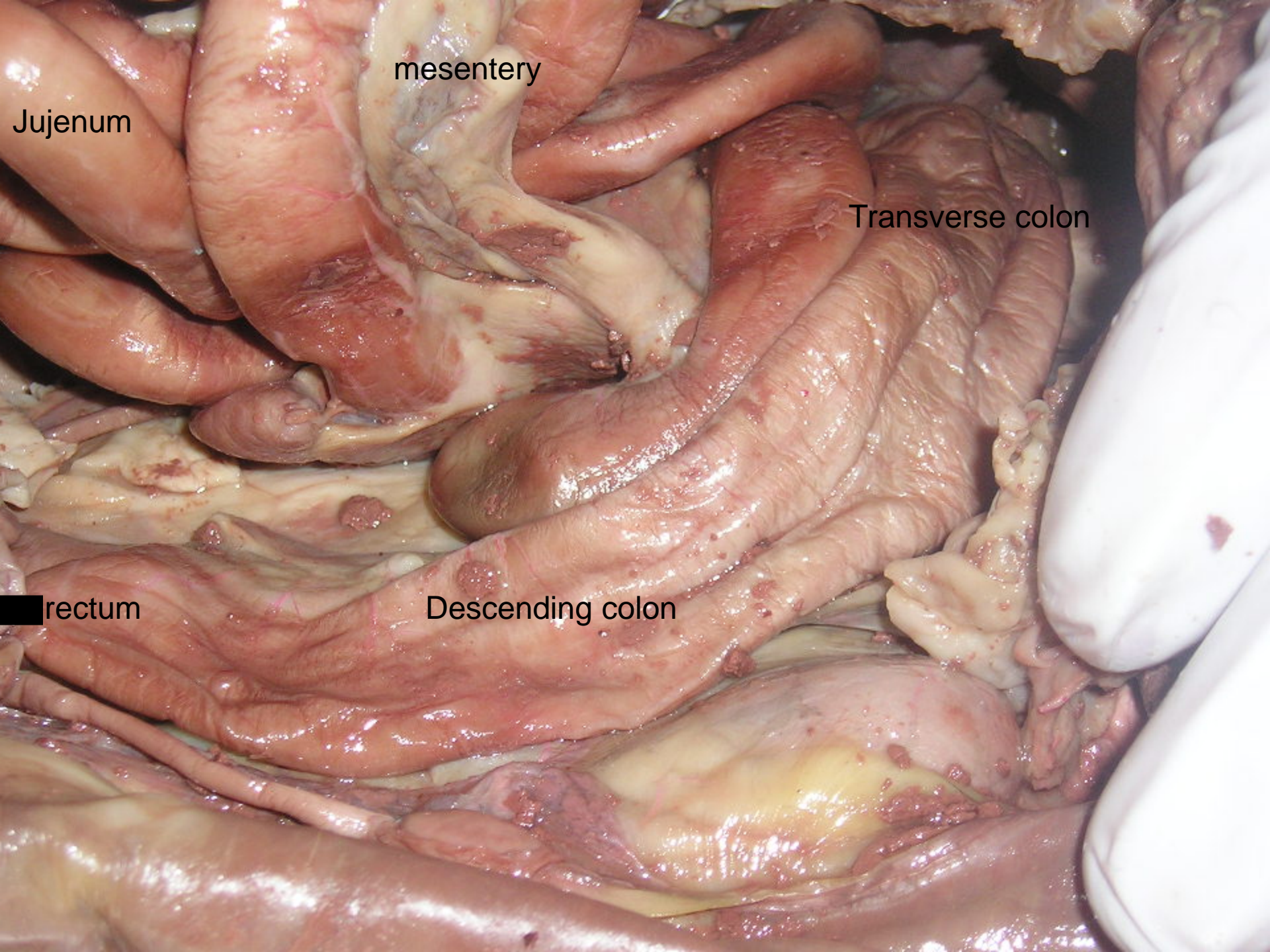
Ascending colon

Ileocecal valve

ileum

cecum





mesentery

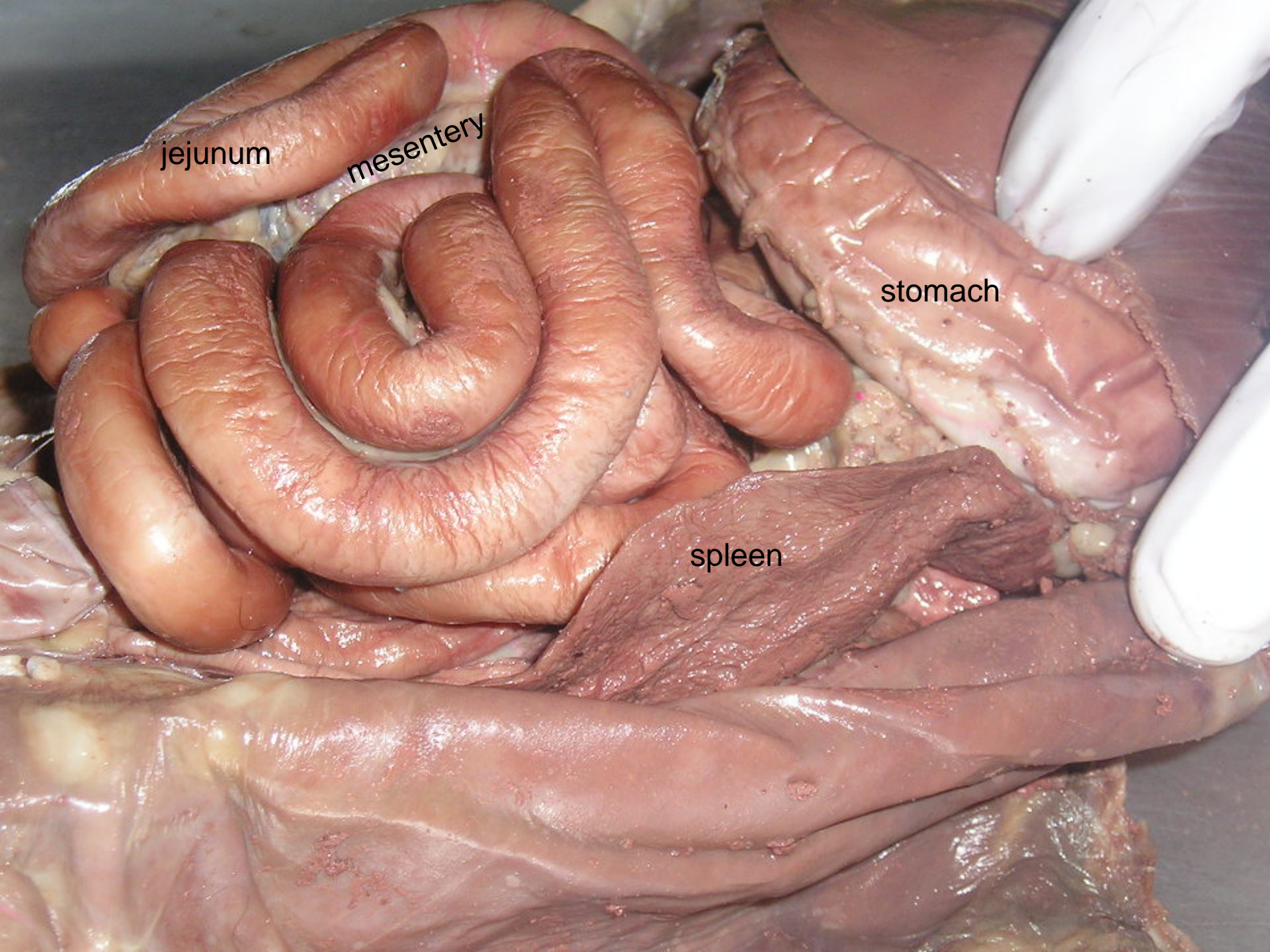
Jujenum

Transverse colon

Descending colon

rectum





jejunum

mesentery

stomach

spleen

The end.