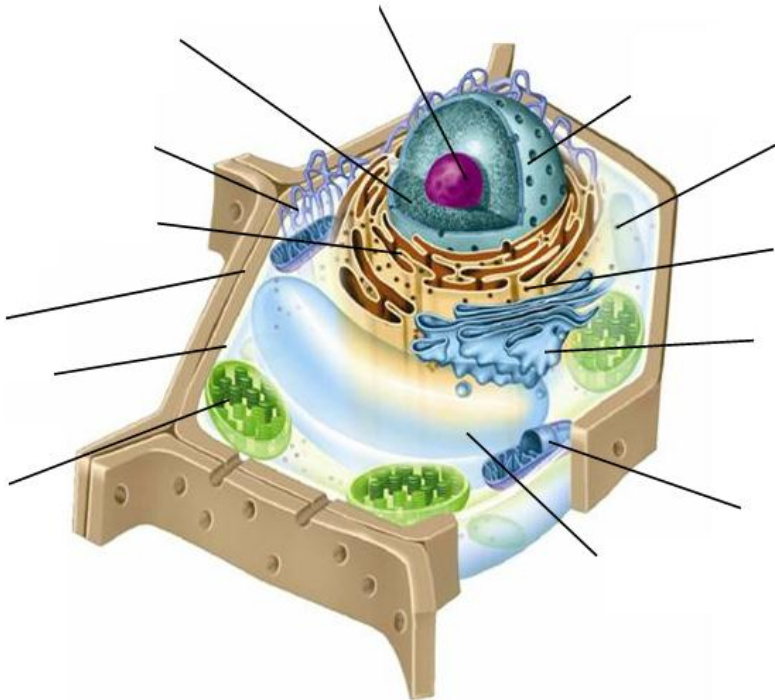


Chapter 7 Study Guide

1. Label all the parts of the plant cell and state their function



2. In the chart below list all of the differences between prokaryotic and eukaryotic cells

	Prokaryote	Eukaryote
Size		
Age (old or young)		
Organelles		
Ribosome (yes or no)		
Nucleus (yes or no)		
Example		

3. Enzyme review: List type of macromolecule, variables that affect their activity and how they speed up reactions

4. List the 4 macromolecules with their monomers

5. Define Osmosis

6. List 3 things that all cells contain

7. For the 3 pictures please label

- a. Outside solution (hypertonic, isotonic or hypotonic).
- b. Draw arrows showing which ways the water will move (into, out or both).
- c. Redraw the cell after osmosis (water movement) showing its size compared to the original

