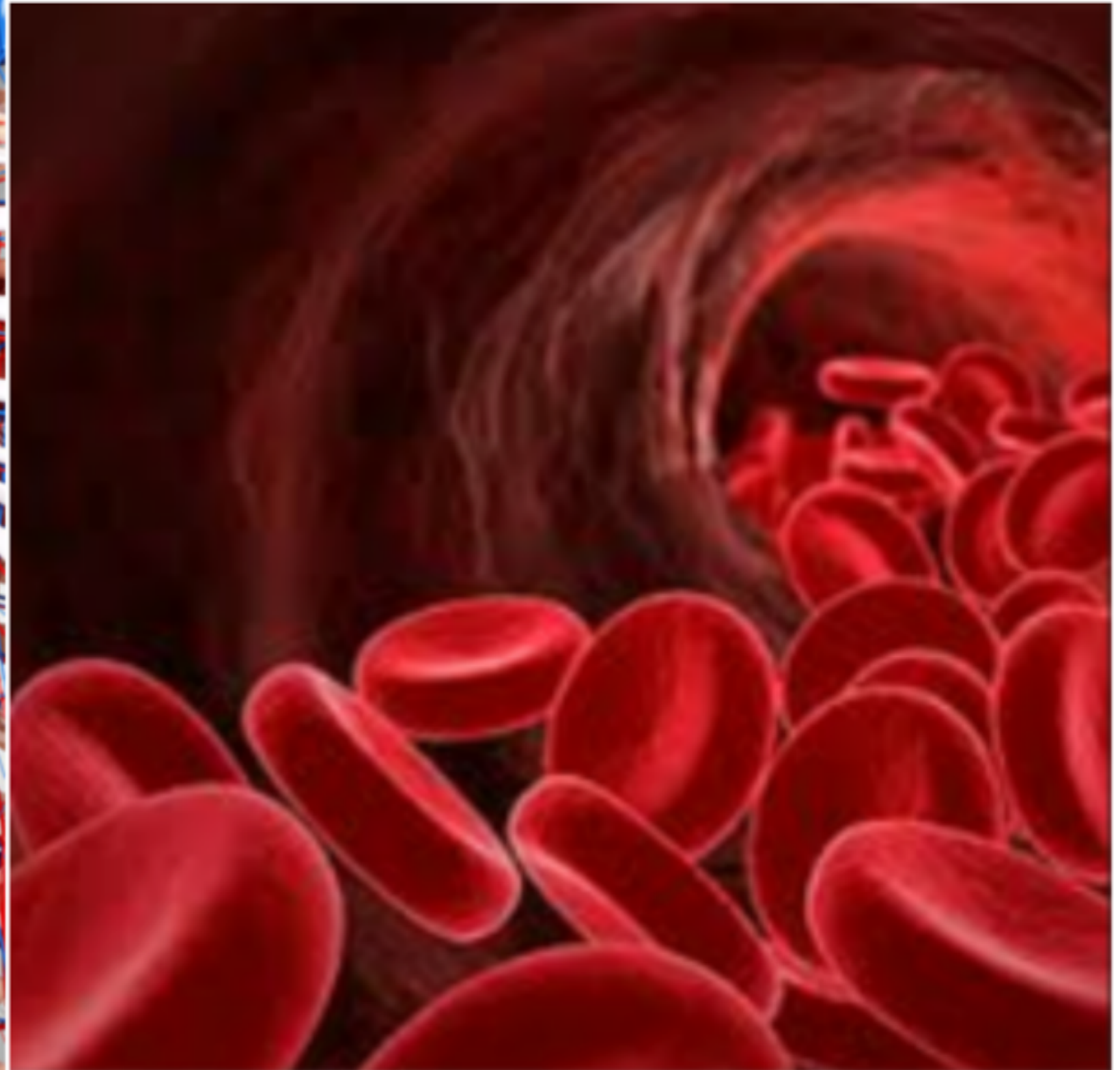
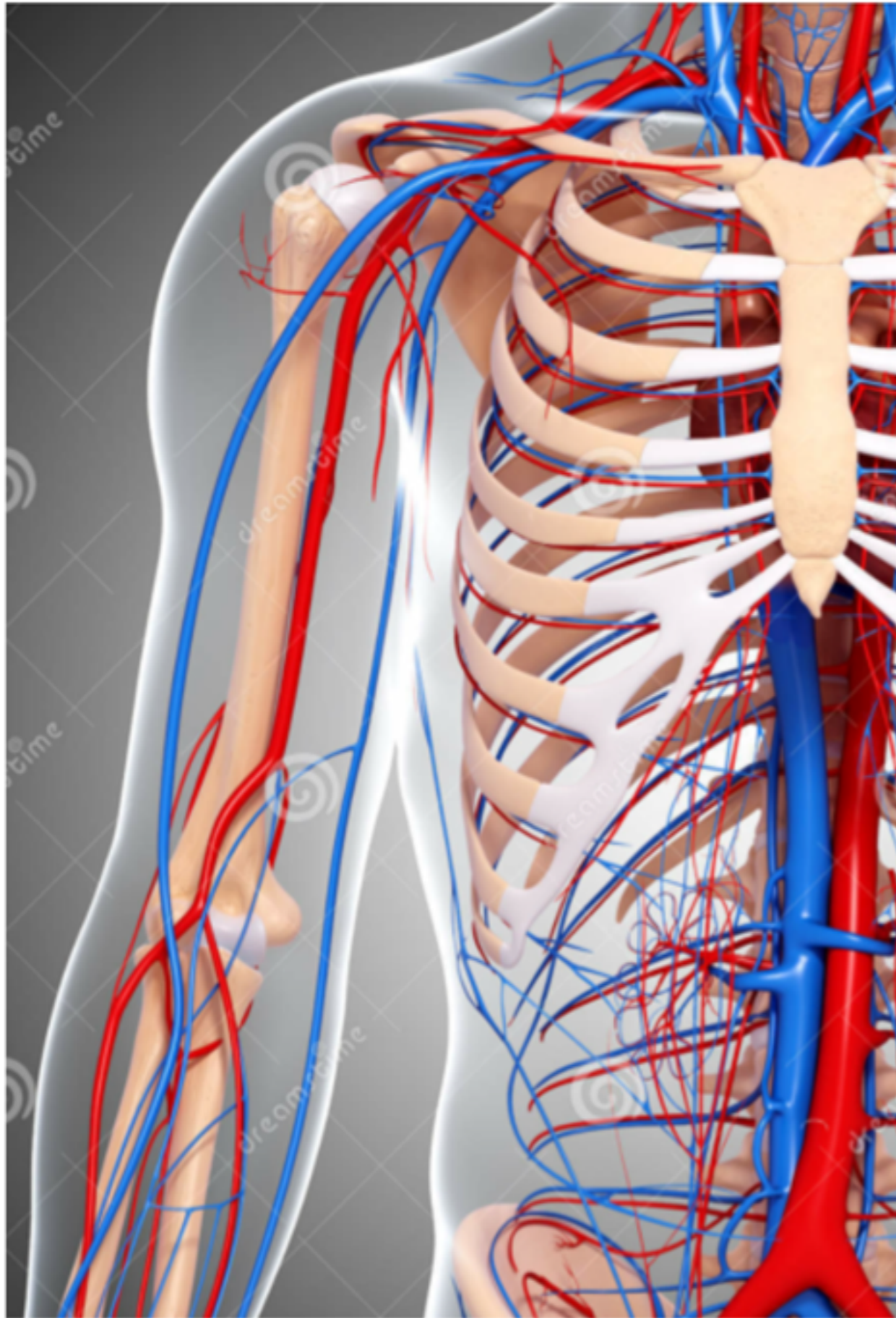


# Circulatory System



## Jobs and main Organs

Circulatory Sys: Transport System

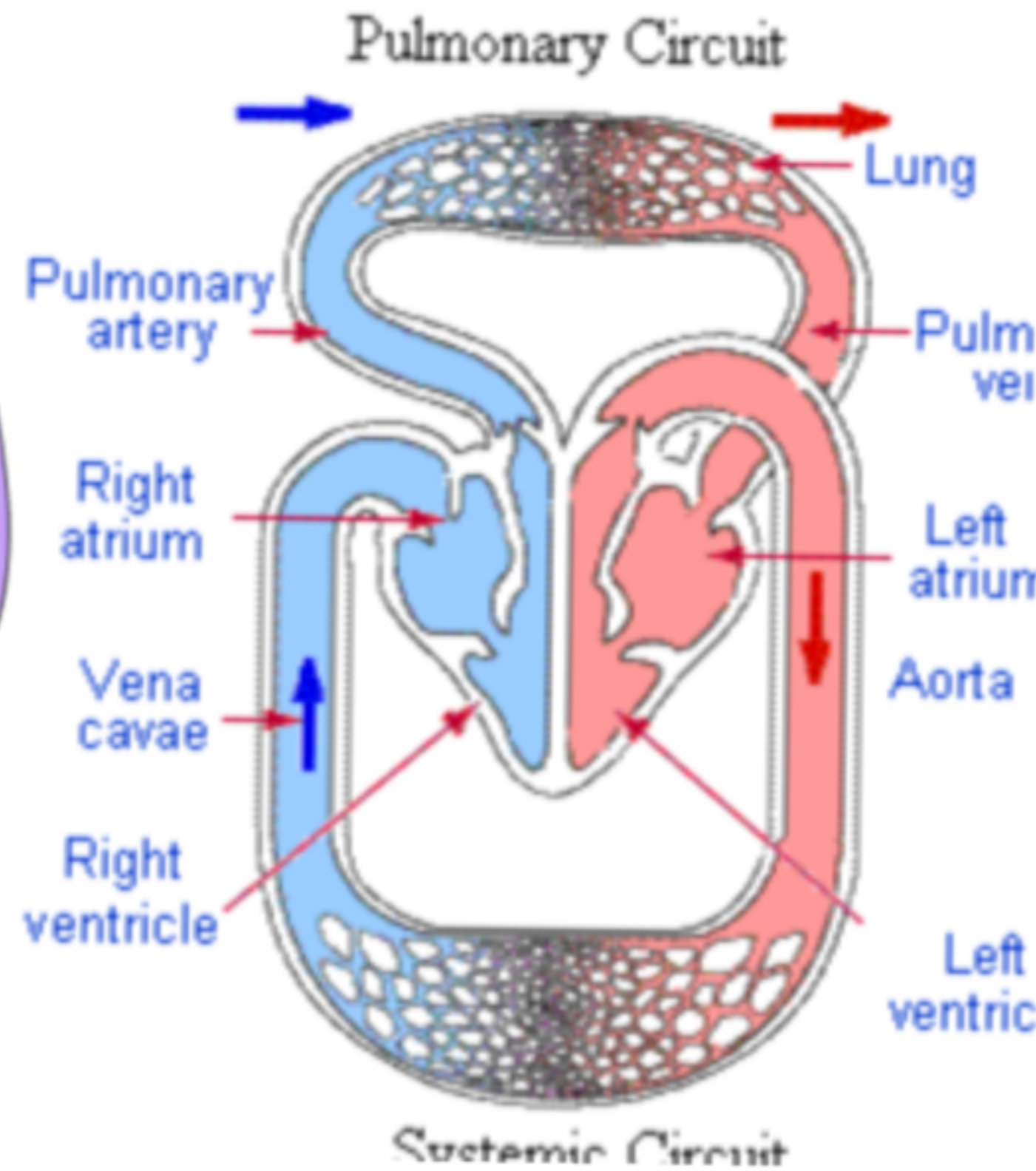
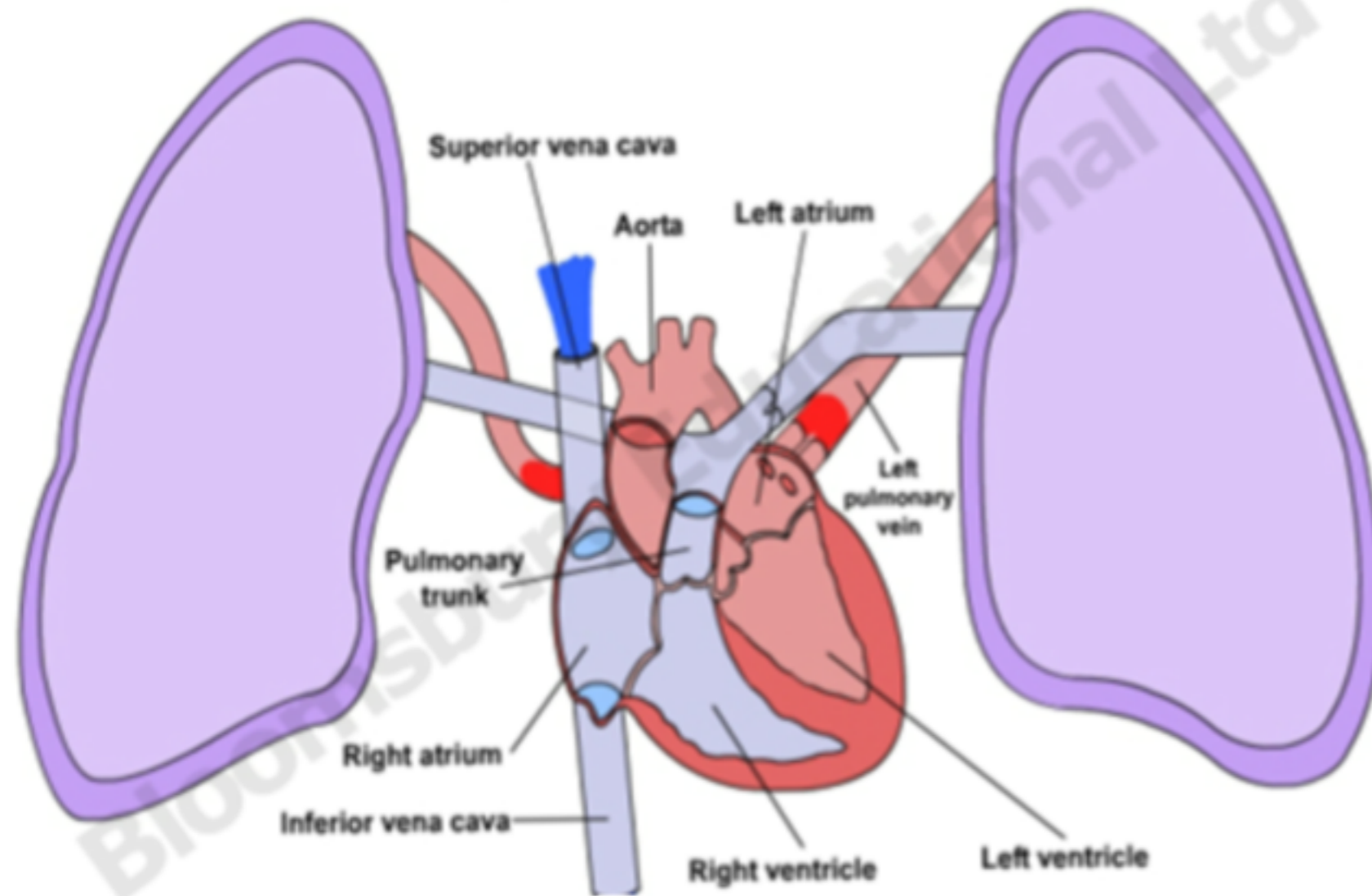
- food, oxygen to cells

- waste,  $\text{CO}_2$  to Lungs,  
Kidneys.

\* Closed Circulatory System  
(confined to vessels)

Main Organ: Heart (pump)

# 2 Circulation Pathways



Pulmonary Circuit:

Heart to Lungs to heart  
- smaller. (Rt. Ventricle)

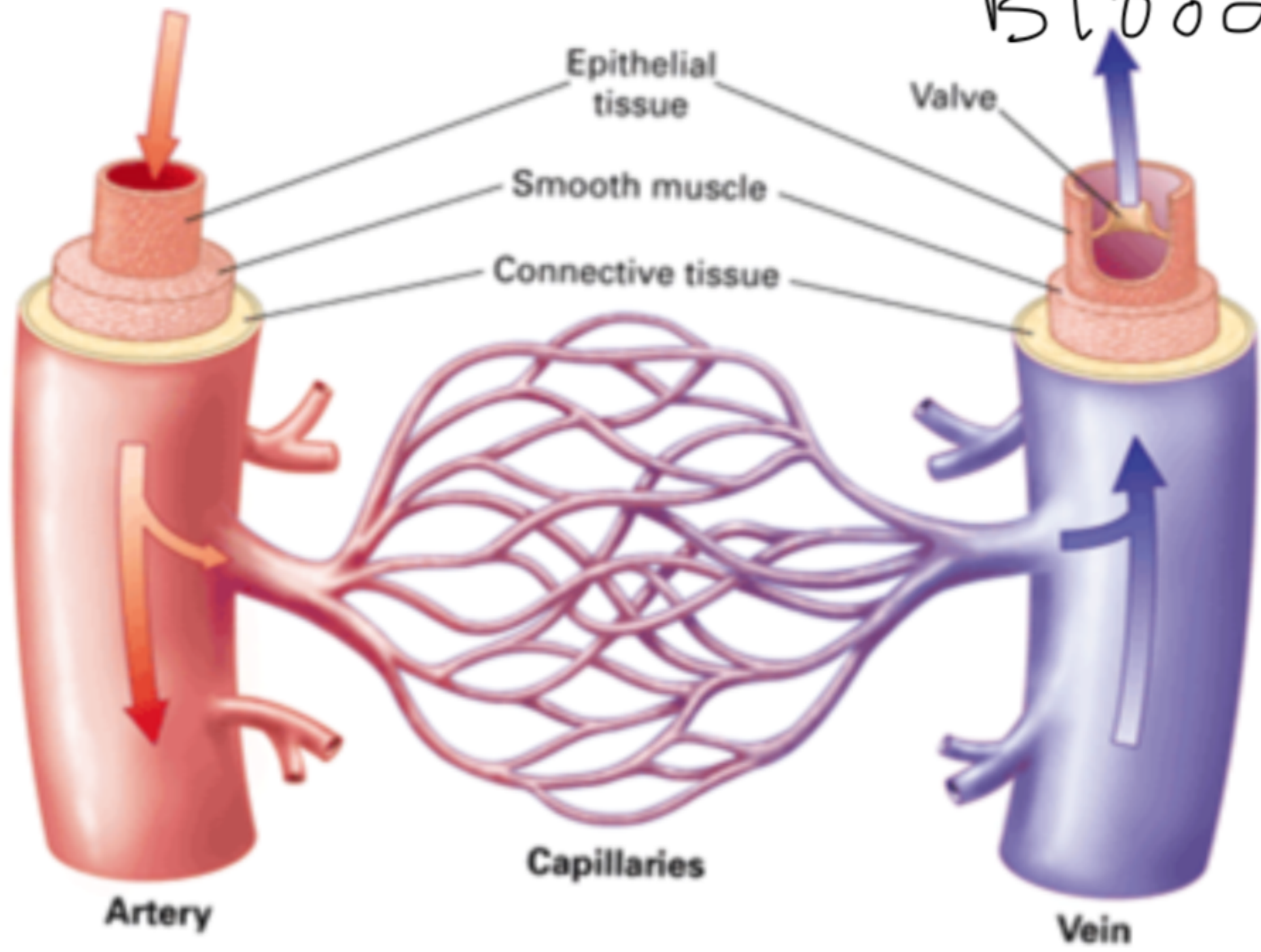
Systemic Circuit

Heart to body to heart

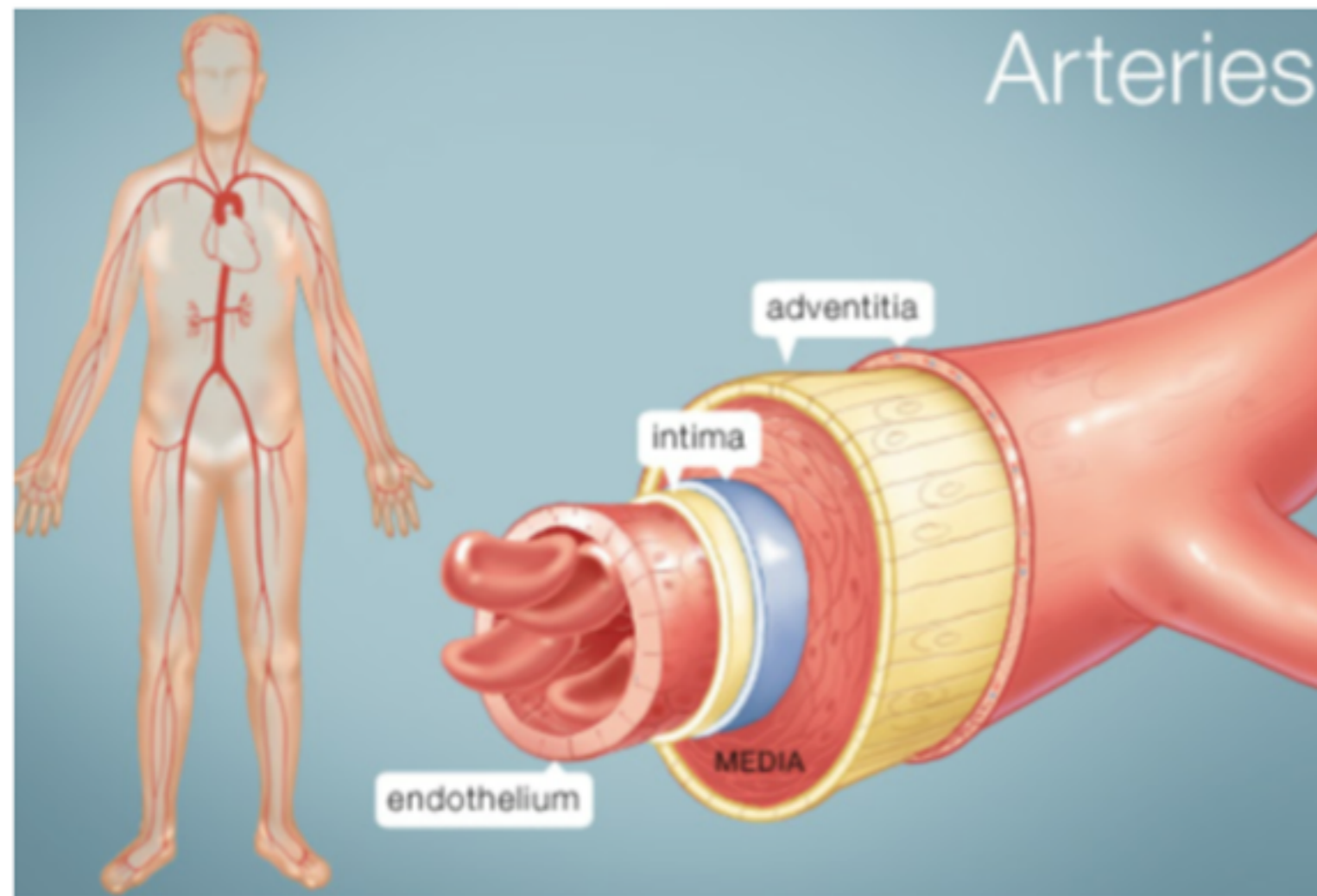
- larger (Lft ventricle)

\* Blood (RBC)

# Vessels - Carry the Blood



# Artery

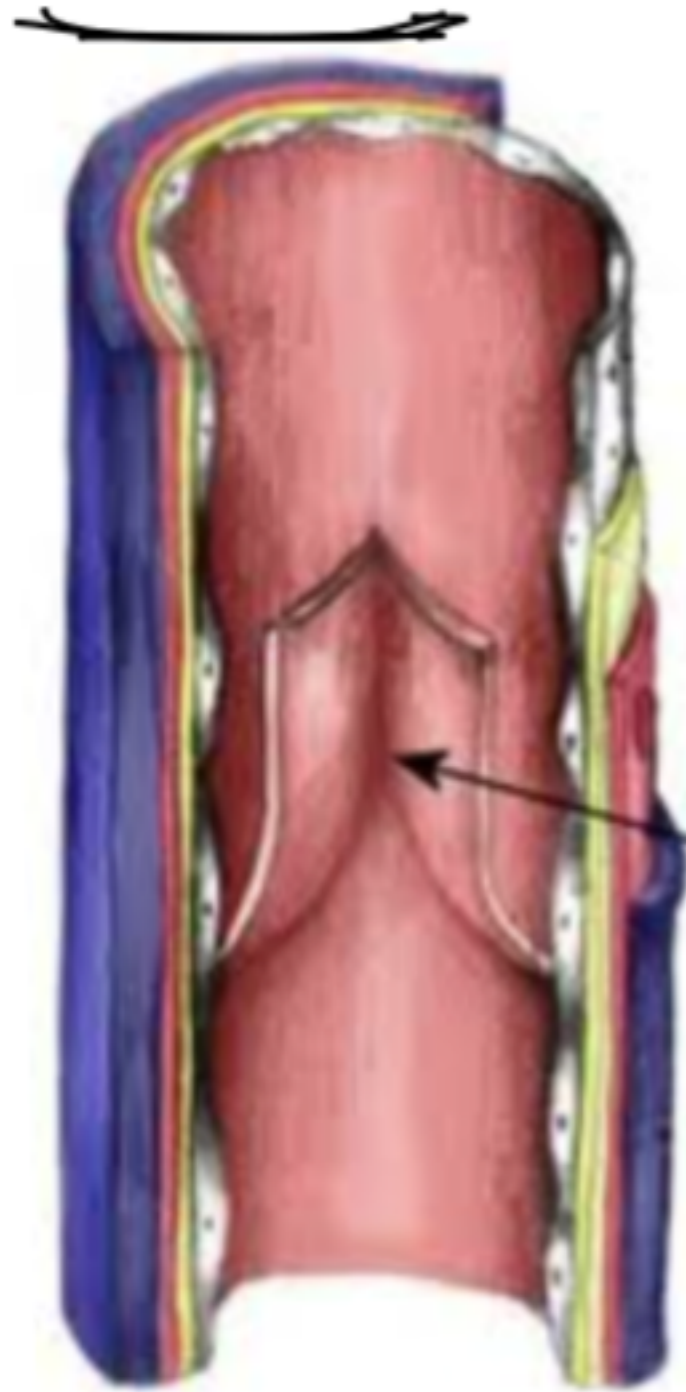


① Vessels that travel away from heart + usually high in oxygen.

③ Very thick + Elastic + muscular

④ handles high Blood pressure

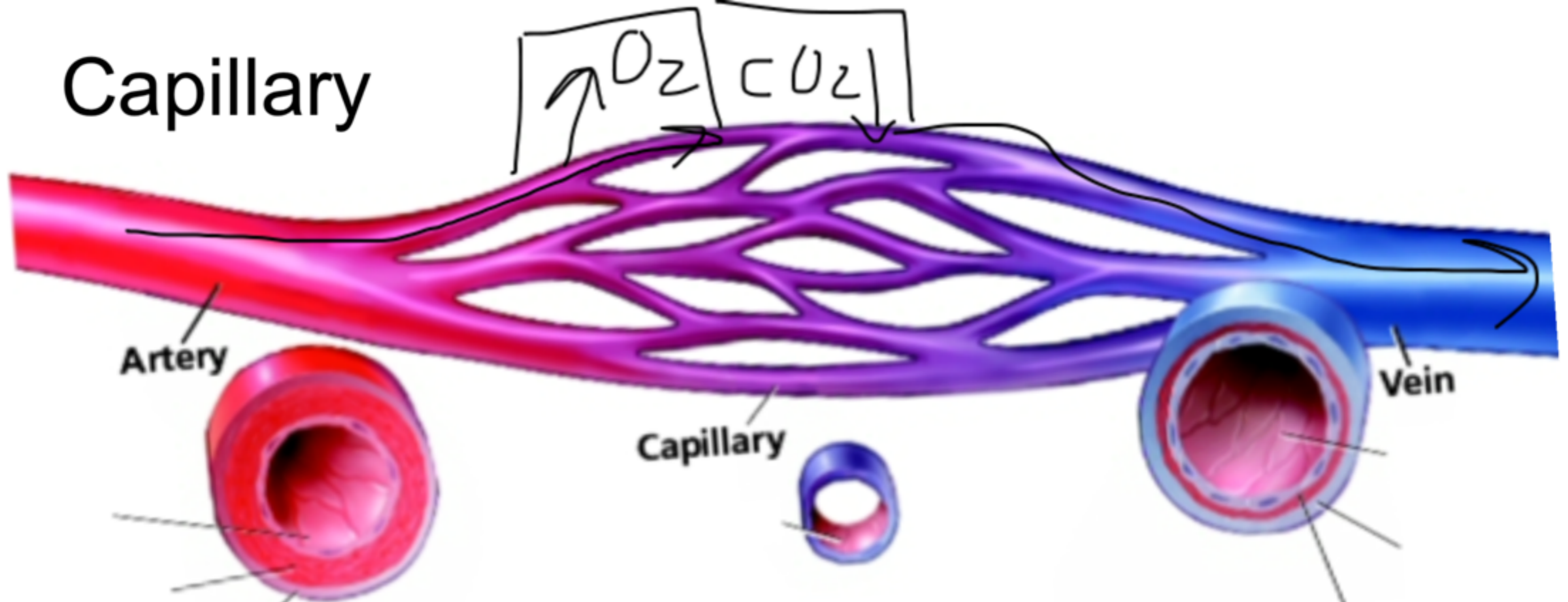
# Veins



① - blood Travels towards the heart in veins

② usually low in oxygen.

③ have Valves to allow one-way travel of blood.



- small, very thin (1 blood cell thick)

\* Gas is Exchanged between cell + vessels  $O_2 / CO_2$



# Disease

- Coronary Artery Disease

