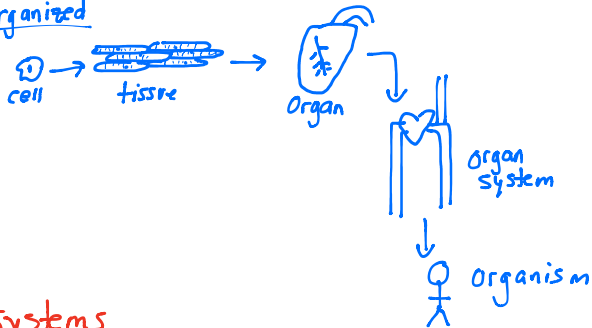


Intro to Anatomy

- Anatomy = structure, parts
- physiology = function, how the parts work

Organized



Systems

- Resp., Circulatory, Nervous, etc...

Cavities

- ① Posterior Cavity
- Cranial
 - Vertebral

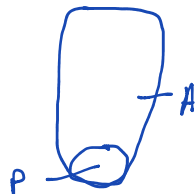
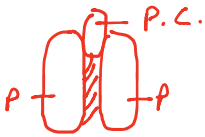
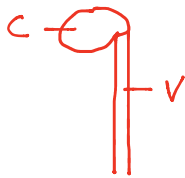
- ② Anterior Cavities

- A - Thoracic
- Pericardial
 - Pleural

* Mediastinum

- B. Abdominal/Pelvic Cavity

- Abdominal
- Pelvic



Serous Membrane

- Membranes that line cavities
- Contain fluid
- Reduce friction

S.M.

