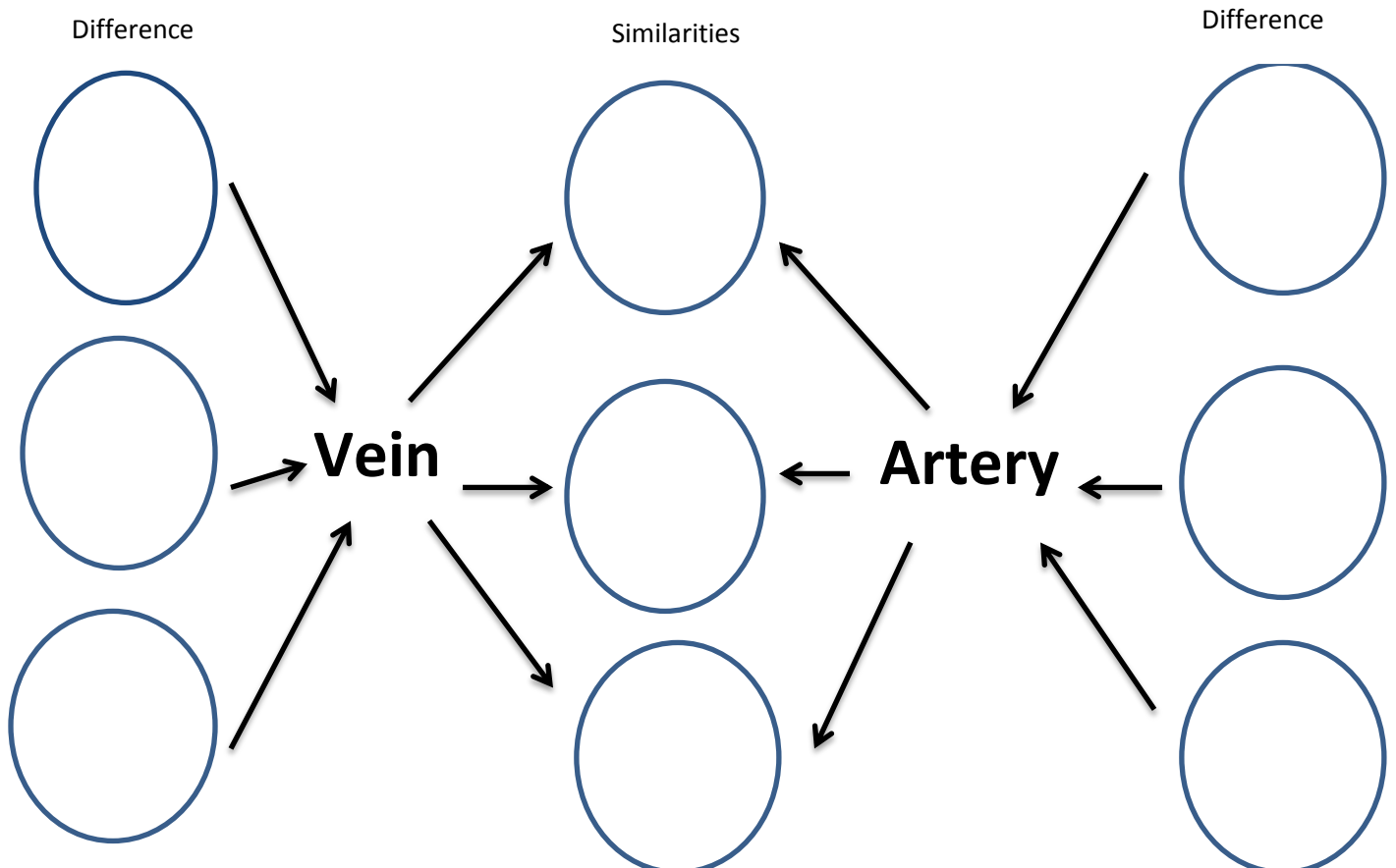


## Study Guide 37

1. Vocabulary Matching Review (16 matching Vocab are on the test, below are ½ of them)

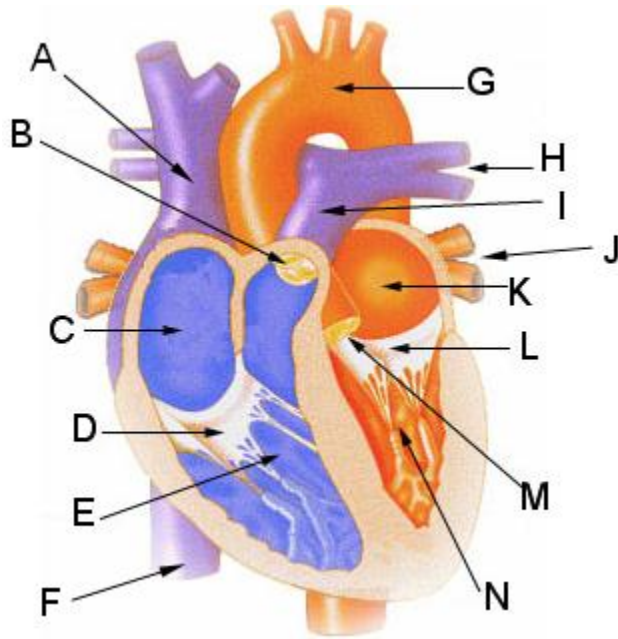
<b>A.</b> Aorta		The passageway known as the windpipe between the larynx and bronchi
<b>B.</b> Capillary		The largest artery leaving the heart that delivers oxygen rich blood to the entire body
<b>C.</b> Systemic Circulation		The flap of tissue that covers the trachea when you swallow
<b>D.</b> Vein		The smallest blood vessels that exchange oxygen and carbon dioxide
<b>E.</b> Alveolus		The pathway of blood between the heart and the body
<b>F.</b> Diaphragm		Blood vessels that transport blood to the heart
<b>G.</b> Trachea		Large dome shaped muscle that contracts causing the rib cage to rise up and expand during breathing
<b>H.</b> Epiglottis		Tiny air sacs that exchange gases with capillaries

2. Fill in the double bubble comparing and contrasting veins and arteries.



3. Explain what takes place in capillaries. (draw and label the capillary, oxygen, carbon dioxide and red blood cell)

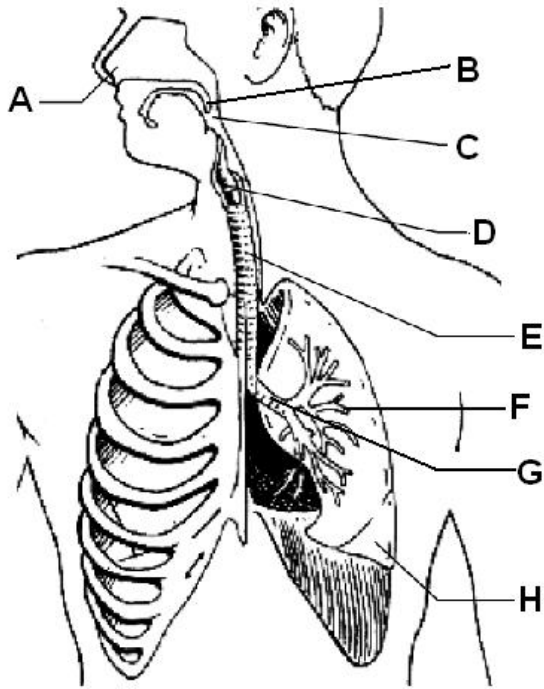
4. Label the heart below with the 4 chambers, 4 valves, and 4 vessels. For the chambers and vessels state if the blood is high or low in oxygen.



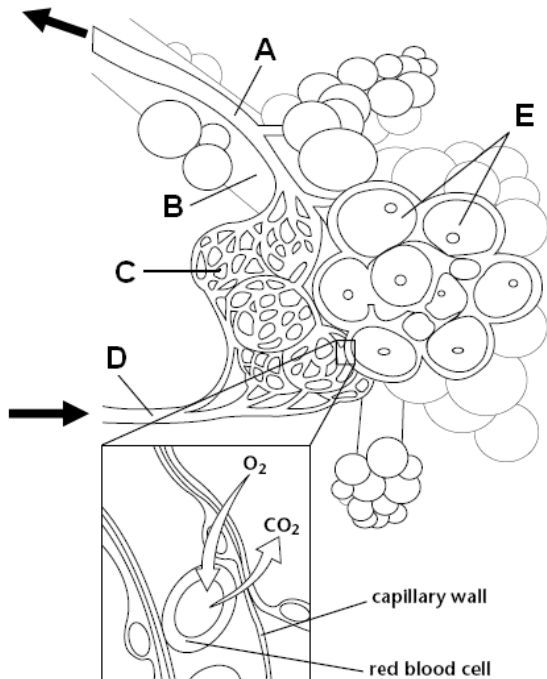
5. List the major respiratory disease and explain how they affect the respiratory system.

6. What is the name of the pacemaker cells and where are they located?

7. Label the below diagram



8. Label the below diagram and then state the steps of gas exchange at the Alveoli.



Steps of Gas Exchange	
1	
2	
3	
4	
5	